

Hypertherm®

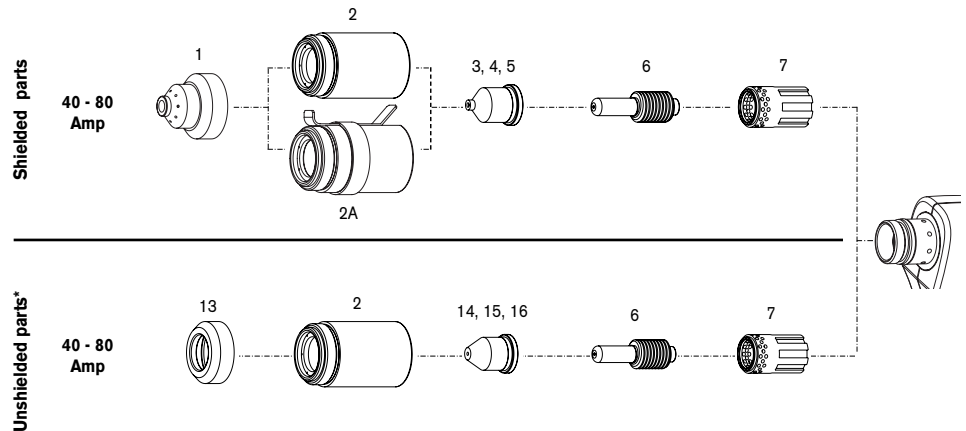
RT80 retrofit torch for powermax1100

Machine torch parts

RT80 consumables



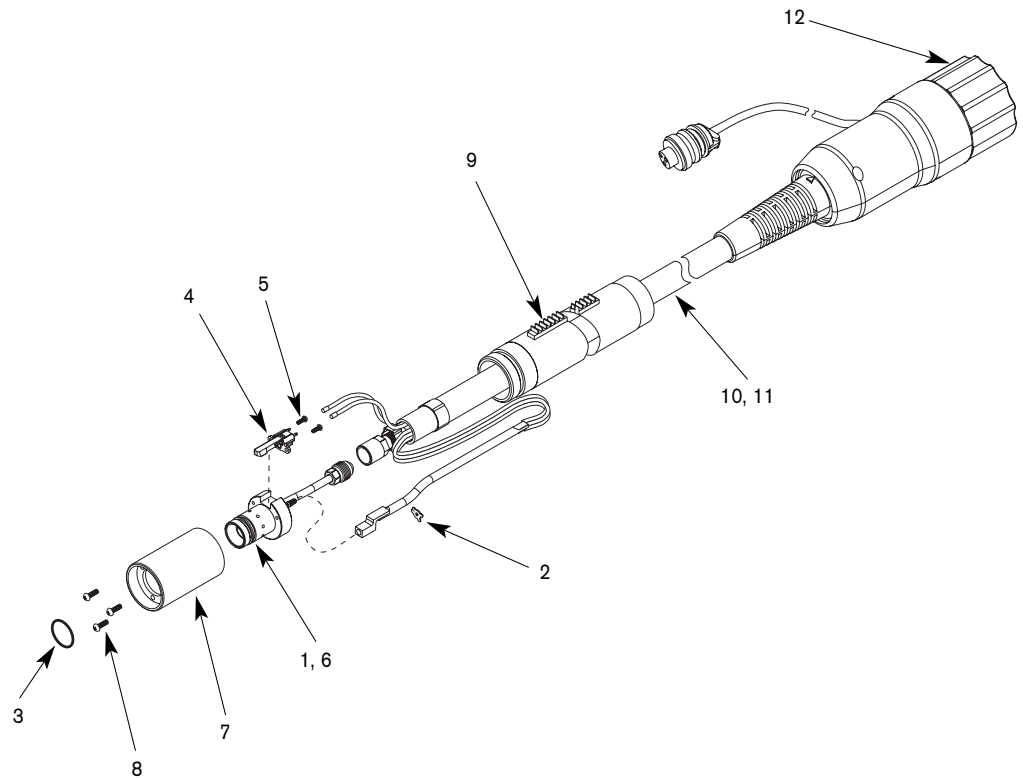
Powermax1100
with RT80 torch



RT80M torch

	DESCRIPTION	80 AMP		60 AMP		40 AMP		QUANTITY PER PACKAGE
		ITEM NUMBER	PART NUMBER	ITEM NUMBER	PART NUMBER	ITEM NUMBER	PART NUMBER	
Shielded parts	Shield	1	120930	1	120930	1	120930	1
	Retaining Cap	2	120928	2	120928	2	120928	1
	Retaining Cap, Ohmic	2A	220061	2A	220061	2A	220061	1
	Nozzle	5	120927	4	120931	3	120932	5
	Electrode	6	120926	6	120926	6	120926	5
	Swirl Ring	7	120925	7	120925	7	120925	1
Unshielded parts*	Deflector	13	120979	13	120979	13	120979	1
	Retaining Cap	2	120928	2	120928	2	120928	1
	Nozzle	16	120980	15	220007	14	220006	5
	Electrode	6	120926	6	120926	6	120926	5
	Swirl Ring	7	120925	7	120925	7	120925	1

RT80M for Powermax1100 machine torch assembly



RT80M torch

ITEM NUMBER	PART NUMBER	DESCRIPTION	QUANTITY PER PACKAGE
	087035^	RT80M Machine Torch Assembly with 25 ft (7.6 m) Lead	
	087036^	RT80M Machine Torch Assembly with 50 ft (15.2 m) Lead	
1	128640	Torch Main Body Replacement Kit	1
2	027889	Retaining Clip	1
3	058519	O-ring	1
4	128639	Cap-off Sensor Replacement Kit	1
5	075571	Cap-off Sensor Screws	2
6	128521	Torch Head Repair Kit	1
7	128643	Torch Mounting Sleeve Replacement Kit	1
8	075618	Torch Mounting Screws	3
9	128710	Torch Positioning Sleeve	1
10	128827	25 ft (7.6 m) Torch Lead Replacement Kit	1
11	128828	50 ft (15.2 m) Torch Lead Replacement Kit	1
12	128826	Quick Disconnect Repair Kit	1
	128645	Torch Mounting Kit (for reassembly after installation)	1

^ Assembly includes consumables